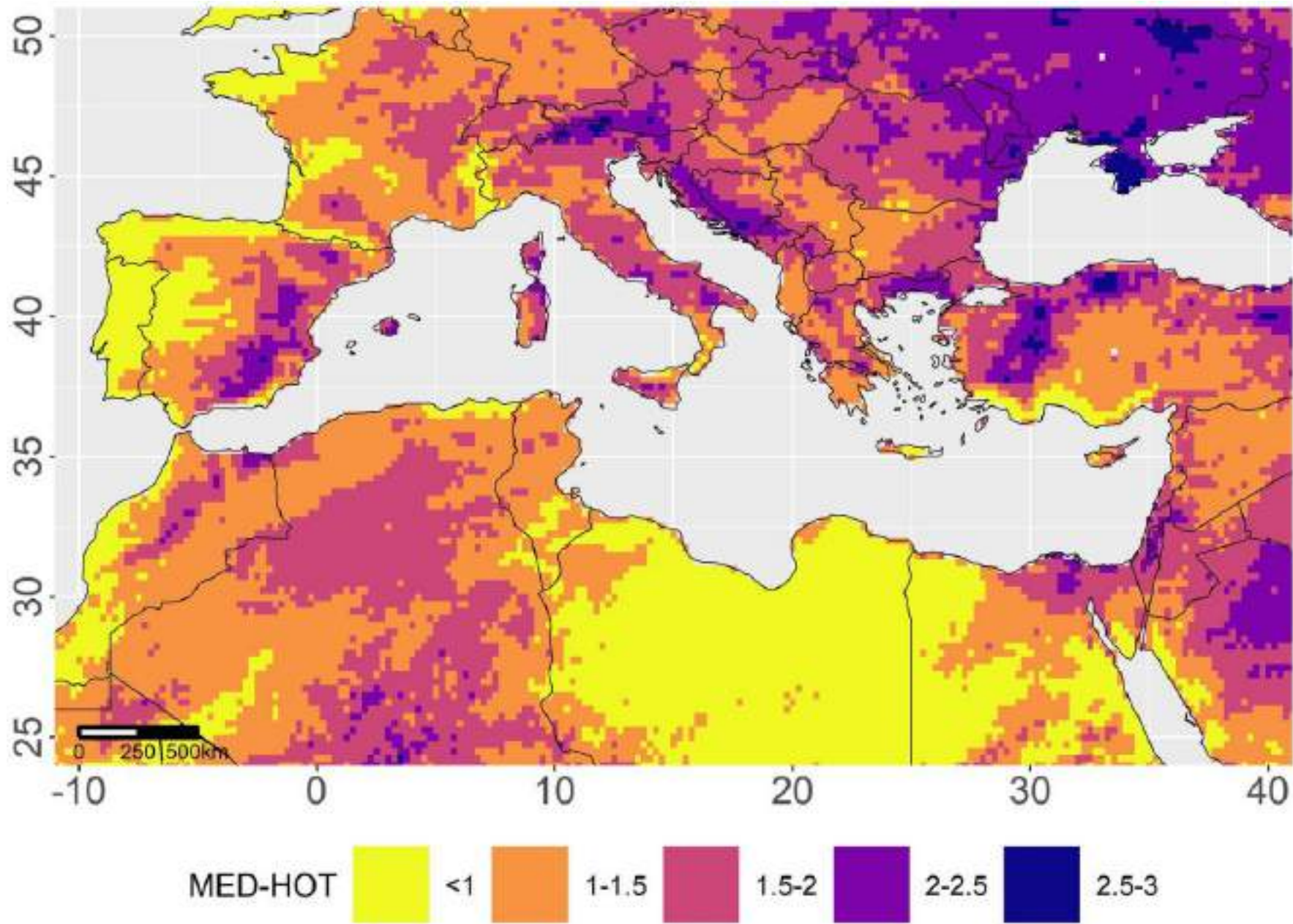
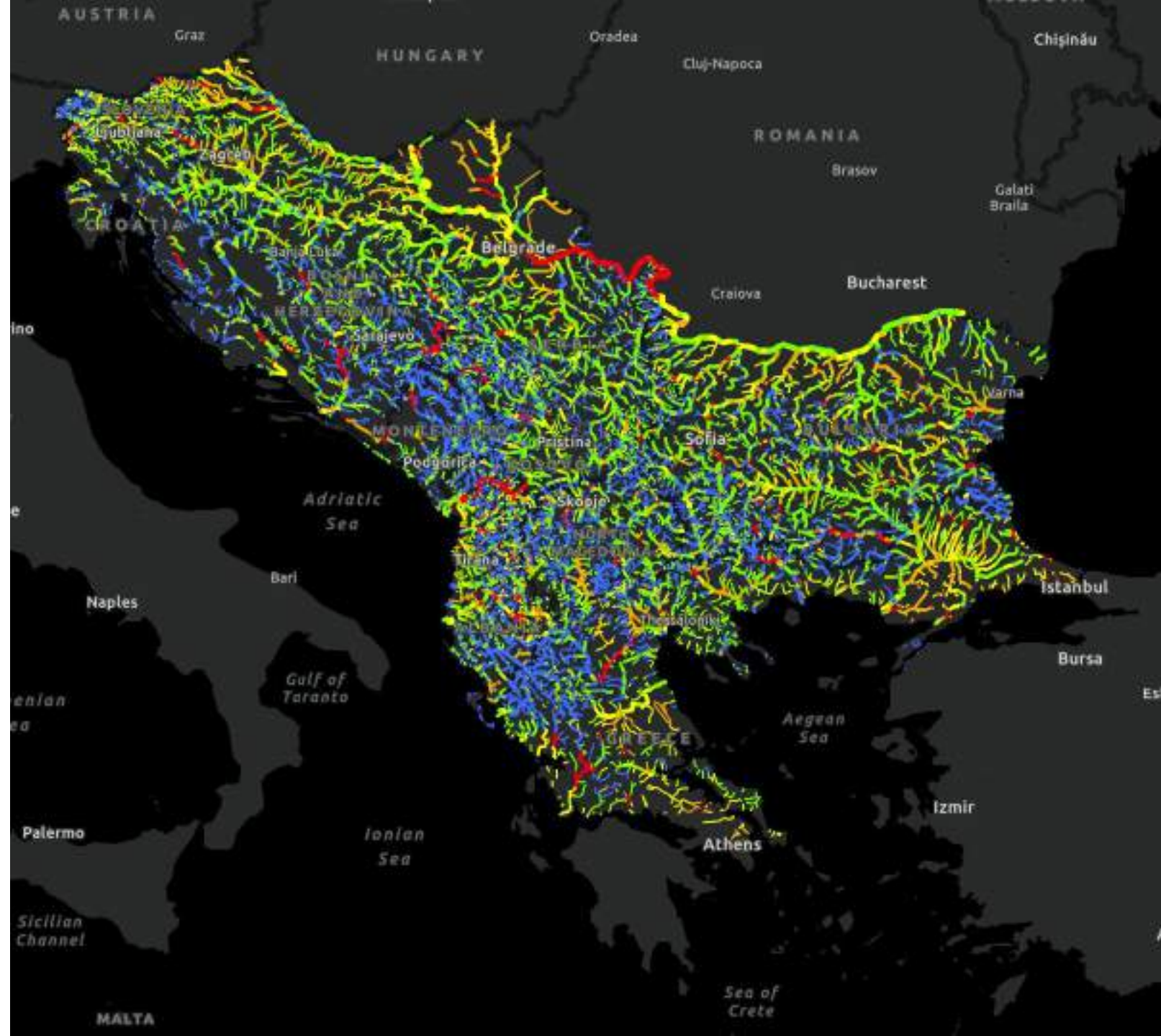




MedINA

Όραμα μας ένας κόσμος όπου οι
κοινωνίες ευημερούν σε αρμονία με τη





Category 1 (blue): Near-Natural / Pristine. Rivers with undisturbed flow regimes and natural floodplains. They function as they did centuries ago.

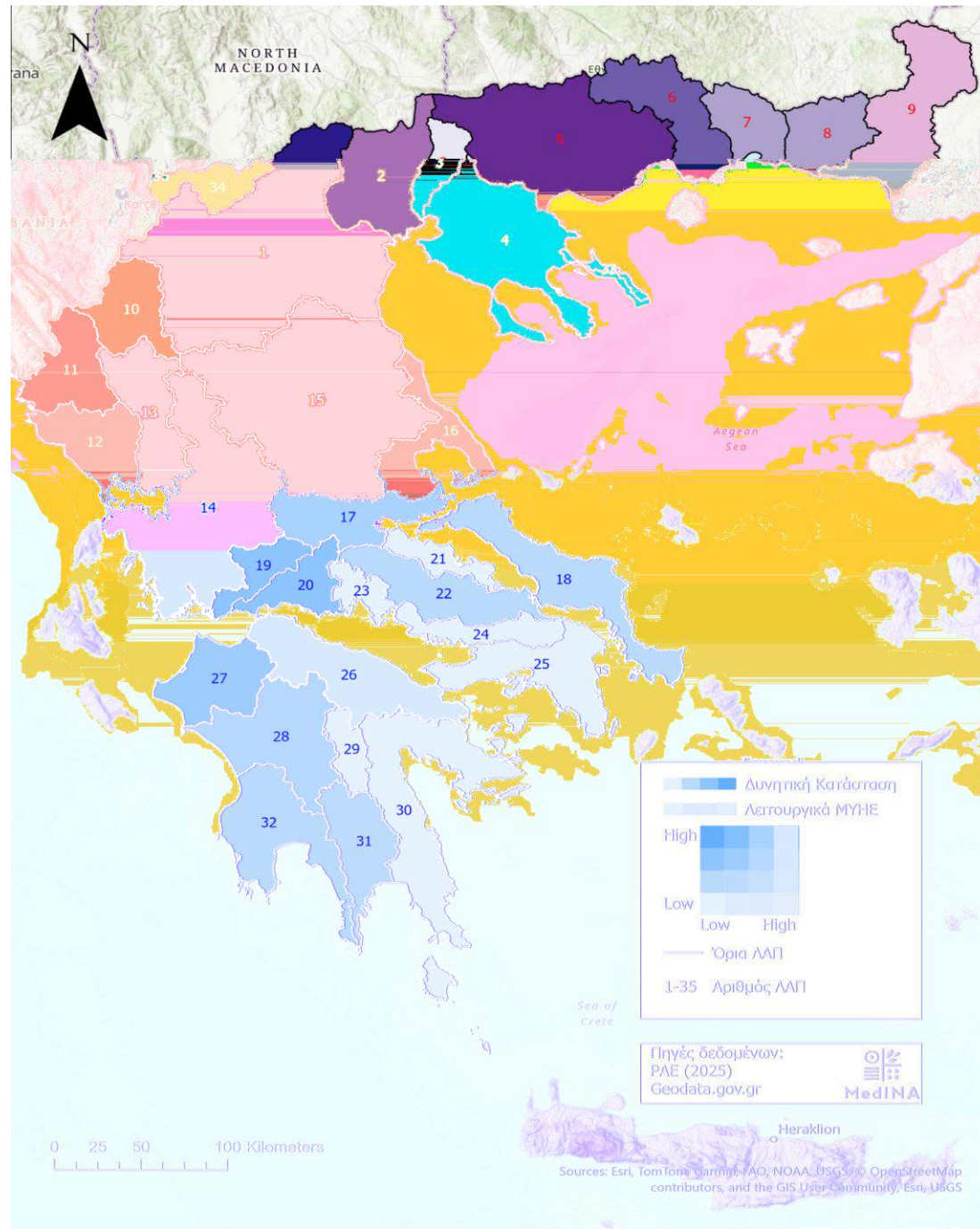
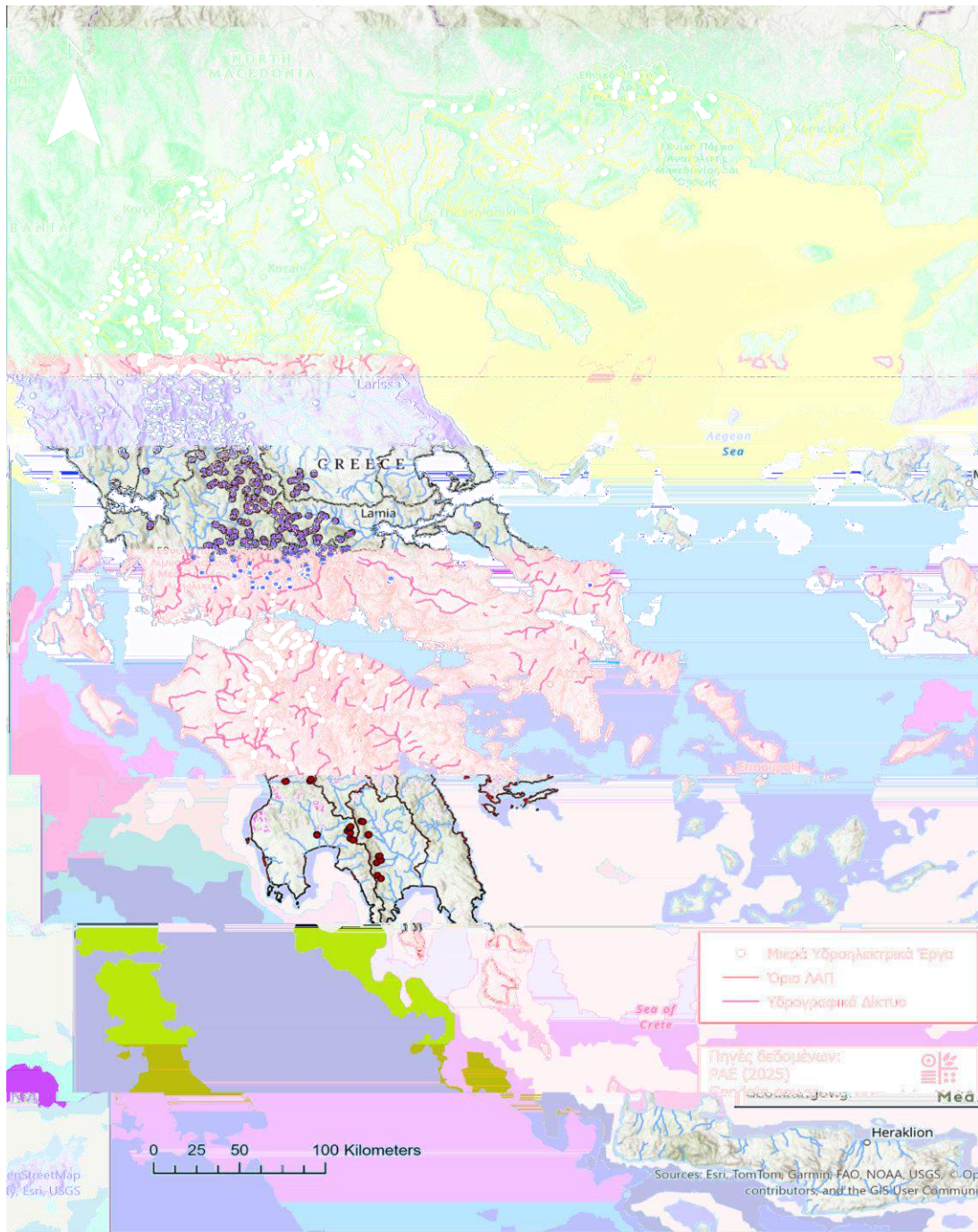
Category 2 (green): Slightly Modified. Minor human interventions exist, but the river retains its fundamental natural character and connectivity.

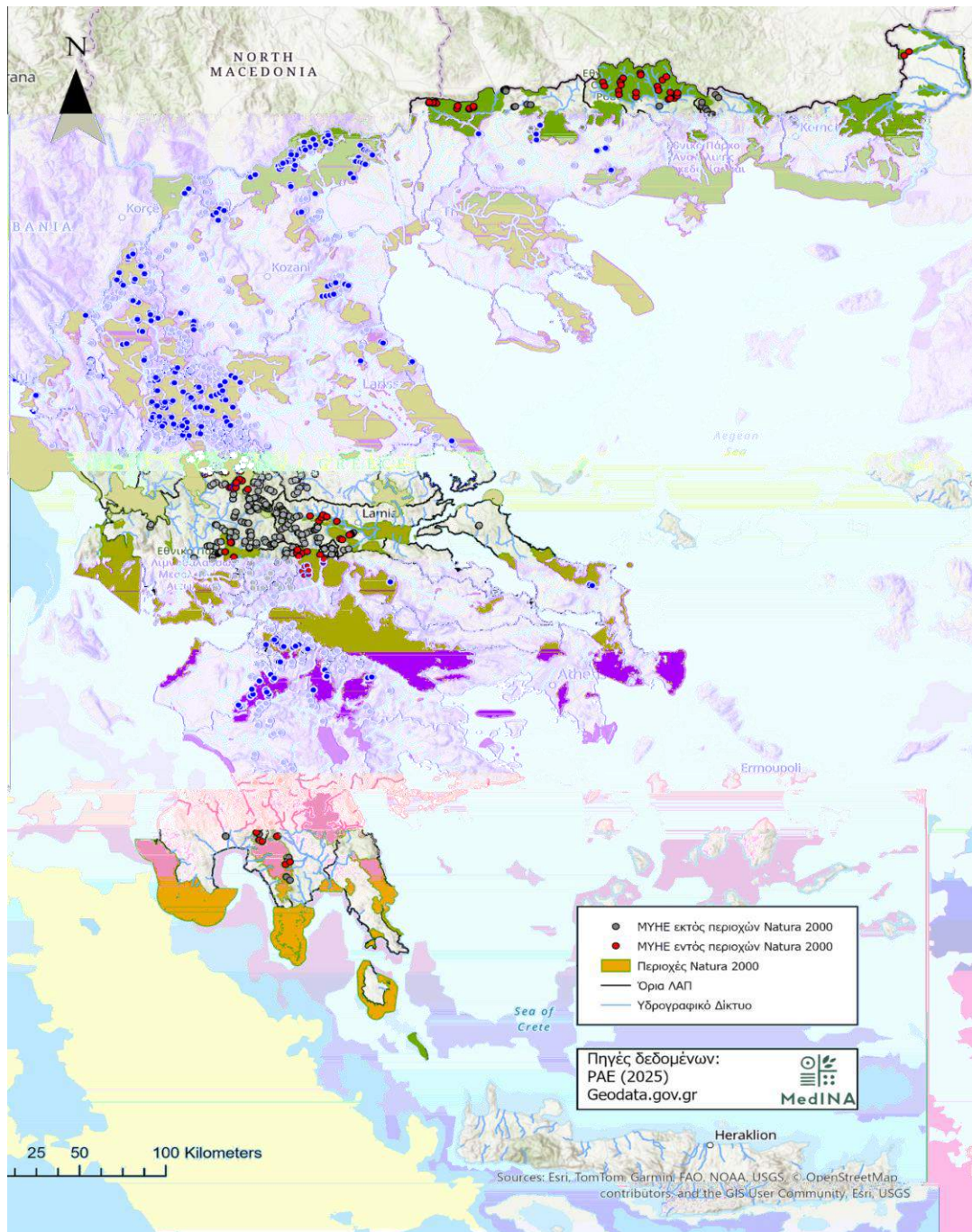
Category 3 (yellow): Moderately Modified. Significant changes to the banks or flow, often due to smaller barriers or localised regulation.

Category 4 (orange): Heavily Modified. The river's natural processes are severely impaired by large dams, embankments, or extensive channelisation.

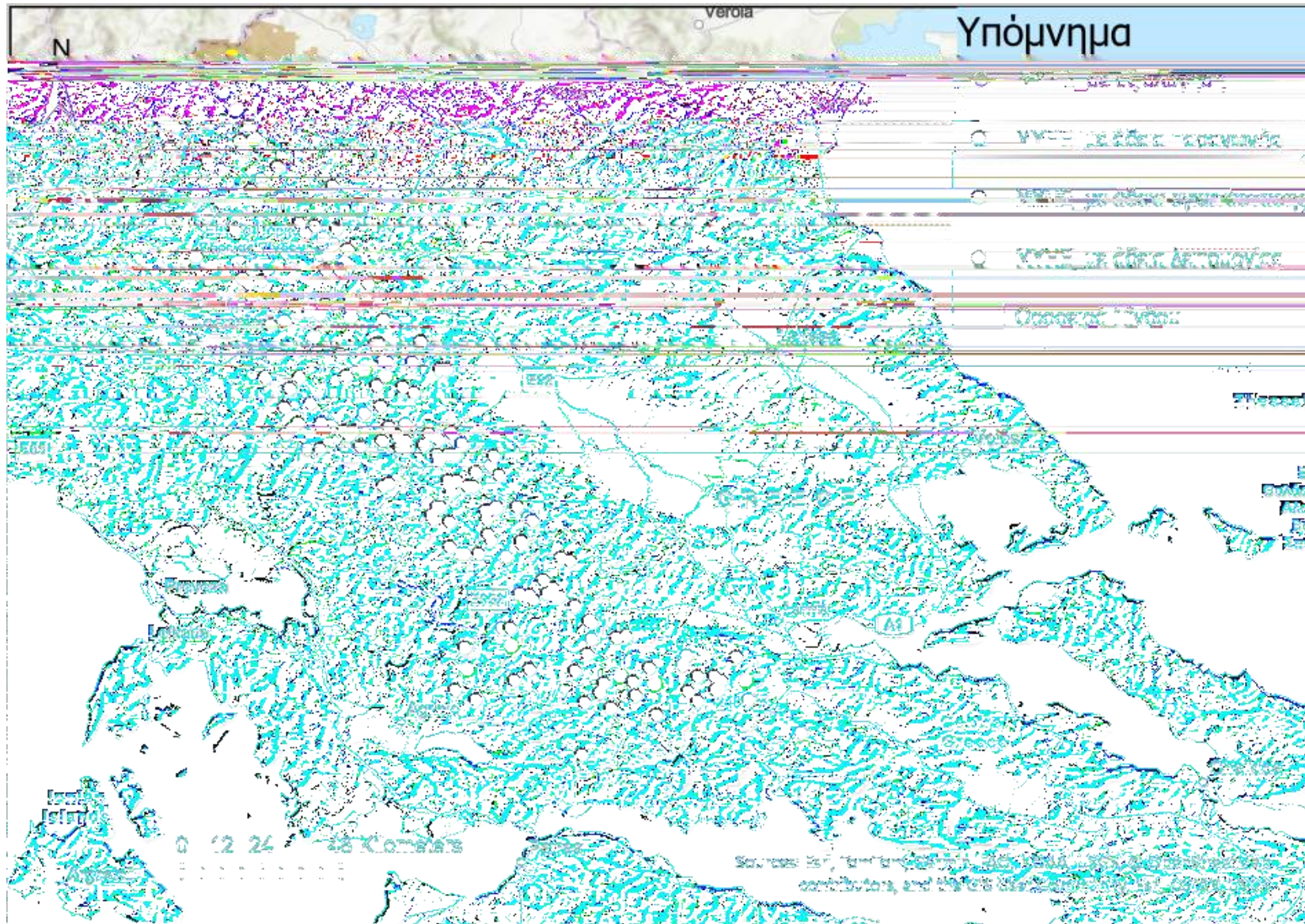
Category 5 (red): Severely Modified / Impounded. The river has been transformed into a series of stagnant reservoirs (impoundments) or concrete-lined canals.





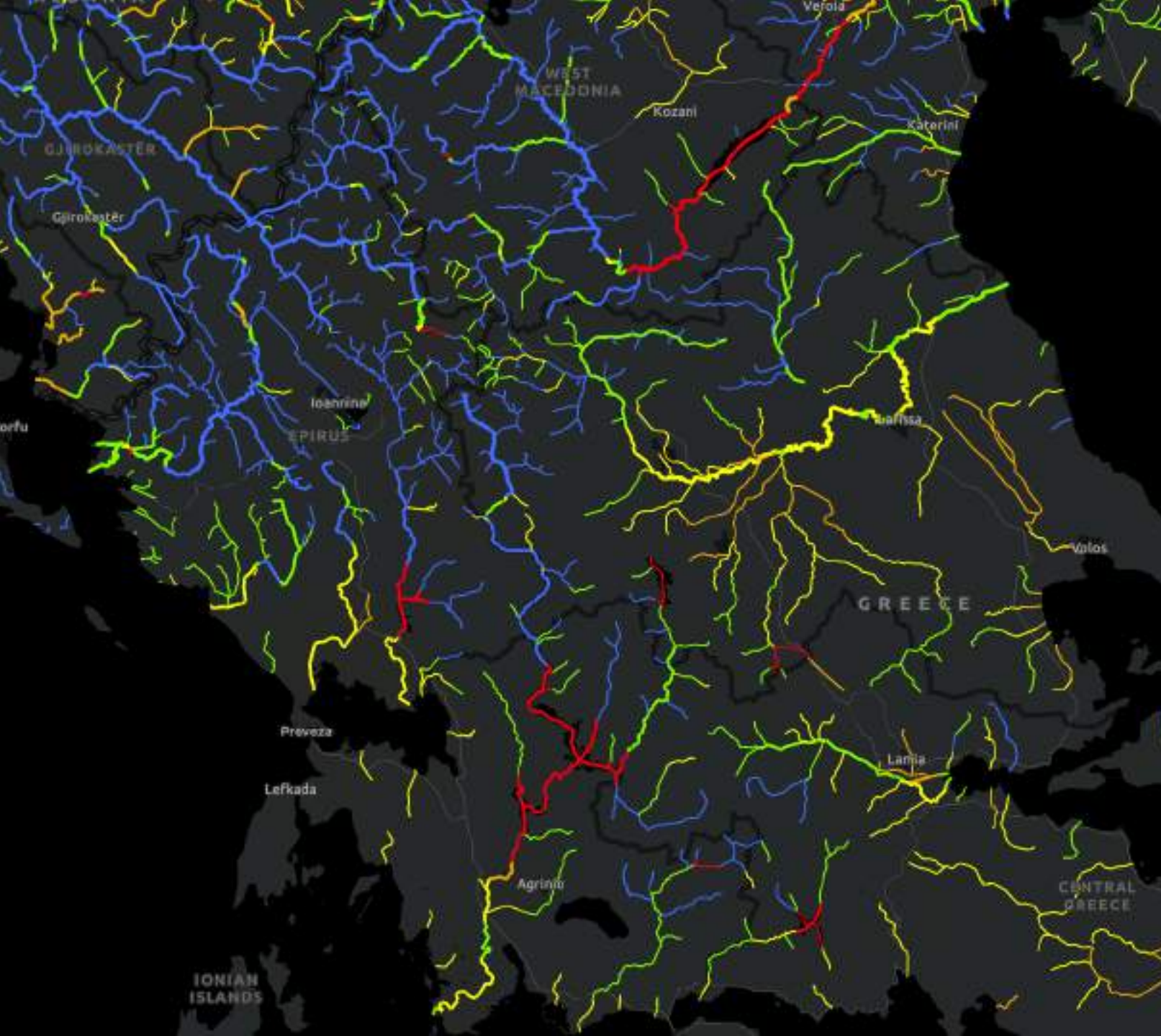


Το 1/3 των ΜΥΗΕ
εντοπίζονται σε
προστατευόμενες
περιοχές του δικτύου
Natura 2000



Άδεια λειτουργίας: 42
Άδεια εγκατάστασης: 12
Άδεια παραγωγής: 152
Σε αξιολόγηση: 27

Το $\frac{1}{3}$ των ΜΥΗΕ
εντοπίζονται στο 8,52%
της συνολικής έκτασης
της χώρας.

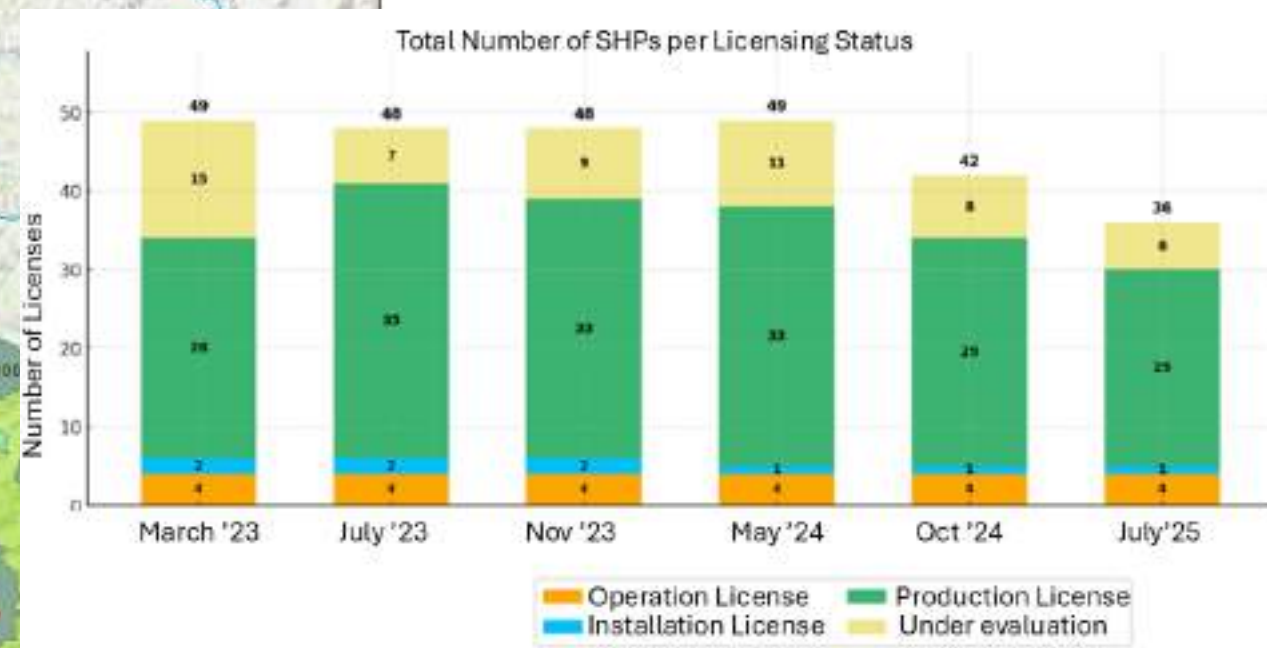
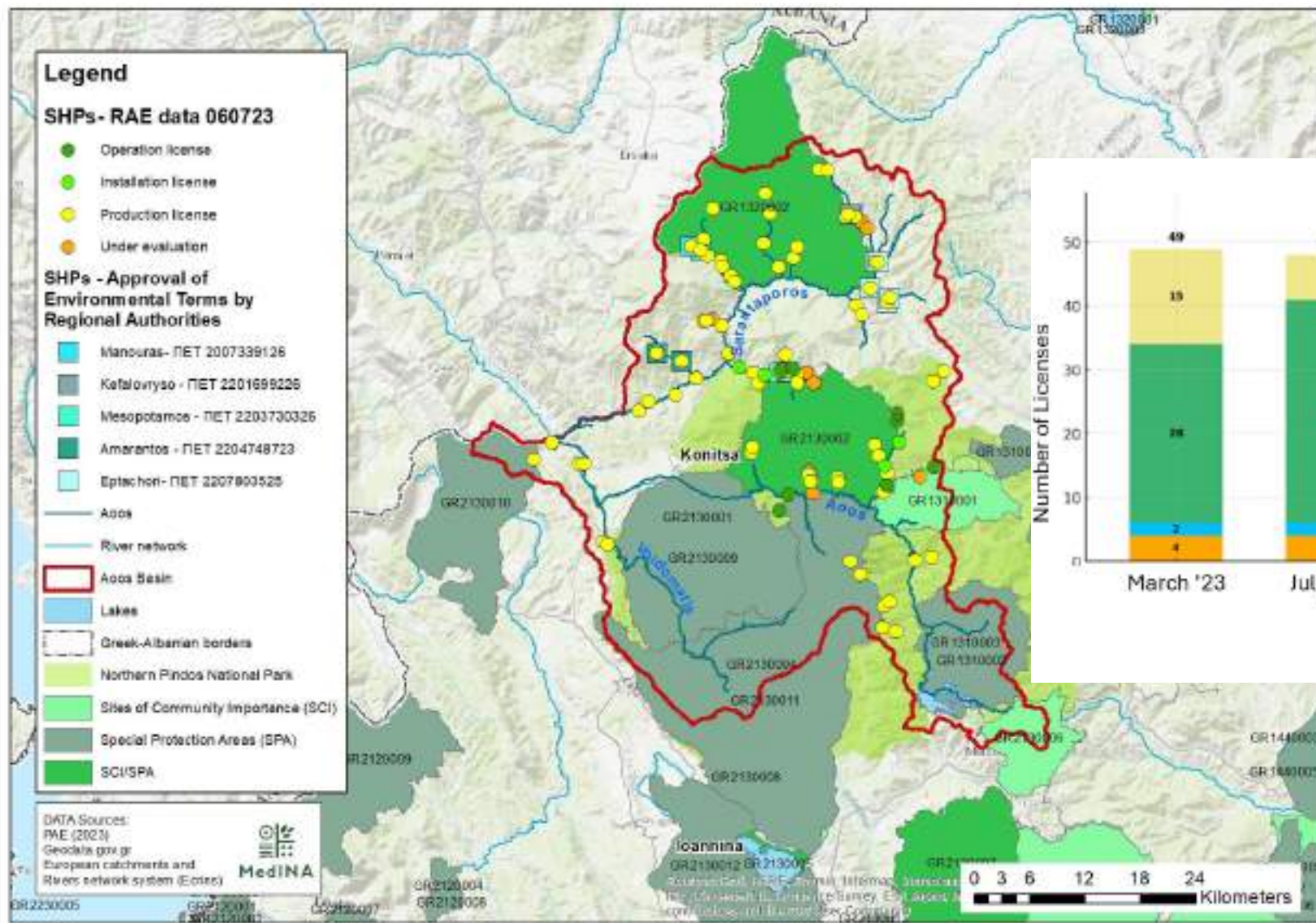


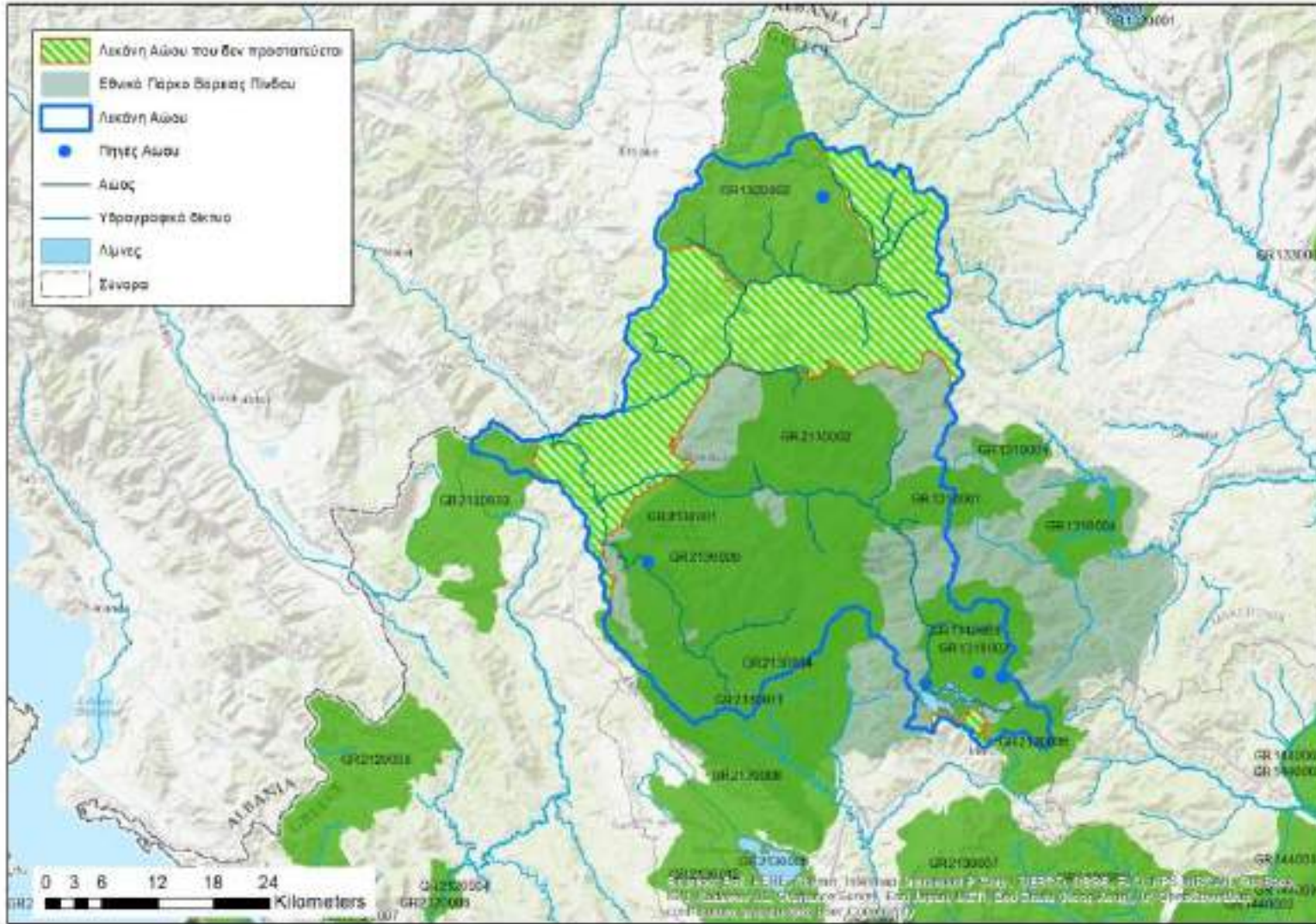
- Category 1 (blue):** Near-Natural / Pristine. Rivers with undisturbed flow regimes and natural floodplains. They function as they did centuries ago.
- Category 2 (green):** Slightly Modified. Minor human interventions exist, but the river retains its fundamental natural character and connectivity.
- Category 3 (yellow):** Moderately Modified. Significant changes to the banks or flow, often due to smaller barriers or localised regulation.
- Category 4 (orange):** Heavily Modified. The river's natural processes are severely impaired by large dams, embankments, or extensive channelisation.
- Category 5 (red):** Severely Modified / Impounded. The river has been transformed into a series of stagnant reservoirs (impoundments) or concrete-lined canals.











Προστατευόμενο Τοπίο και Προστατευόμενος Φυσικός Σχηματισμός Σαρανταπόρου & Αΐου

Καθοριστικής σημασίας είναι ότι
απαγορεύει την κατασκευή
οποιαδήποτε

**υδροηλεκτρικών
εγκαταστάσεων,**

φραγμάτων και εμποδίων σε όλα τα
υδατορεύματα και θέτει περιορισμούς
στην κατασκευή ταμιευτήρων! (Άρθρο
3).

Ευχαριστώ για την προσοχή σας



MedINA

